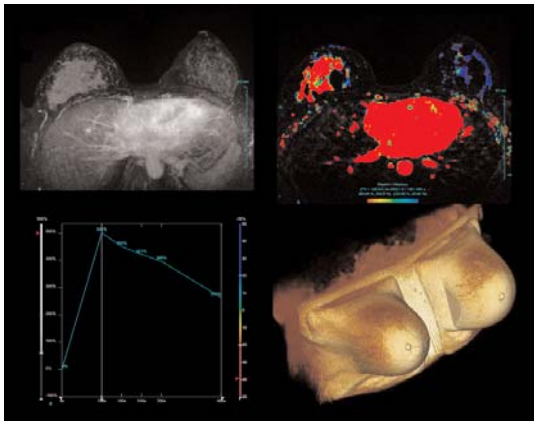


WHEN IS A BREAST MRI NECESSARY?

A mammogram typically is used as a first test for breast abnormalities. If a mammogram detects a problem, further specialized mammography and/or ultrasound may be used. If your doctor is still concerned, a Breast MRI is a diagnostic tool that may be considered.

Breast MRI has been proven to potentially have value when other tests are inconclusive.



Images from a scan.

If you have additional questions about the Breast MRI exam, view Frequently Asked Questions from patient conversations at www.wakeradiology.com/breastmri.

YOUR BREAST MRI IS SCHEDULED FOR:

DATE: _____

TIME: _____

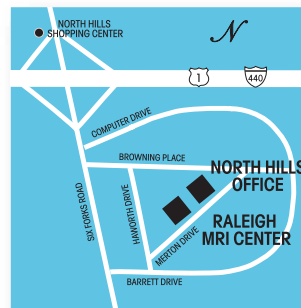
LOCATION: RALEIGH MRI

Bring this brochure and forms that your doctor has given you.

REFERRING PHYSICIAN: _____

If for any reason you are unable to keep your scheduled appointment, we ask that you notify us immediately (24 hours in advance if possible), so that the time set aside for you may be given to someone else in need of a scan.

For scheduling and questions, call Jennifer Pearce 919-782-7666.



RALEIGH MRI
3811 MERTON DRIVE
RALEIGH, NC 27609
PHONE: 919-782-7666
FAX: 919-783-6330



TOLL FREE 1-800-675-2232
WWW.WAKERADIOLOGY.COM

Please bring all insurance information to each visit. Most major insurers will pay for radiology examinations, although some require prior authorization for certain procedures. Patients may be required to pay at the same time of service, depending on the type of insurance coverage. You should check your benefits with your insurers at least a day before the exam.

Your insurance policy is a contract between you and your insurance company. As a courtesy to you, we will be glad to file your insurance claims. Bring your insurance card with you when you come for the exam. You will be responsible for all services that are not covered by your insurance.

We participate with most health care plans. If you have any questions about your coverage, you may call our business office at (919) 787-7411 or toll-free at 1-800-675-2232.

Breast MRI

STATE-OF-THE-ART

IMAGING

THAT LOOKS

DEEPLY INTO

THE BREAST.

10 cm



DIAGNOSTIC IMAGING, INC.

WHAT IS BREAST MRI?

COMPARED TO MAMMOGRAPHY, BREAST MRI IS A COMPLETELY DIFFERENT WAY OF LOOKING AT THE BREAST.

IT IS AN ADVANCED TOOL USING SOPHISTICATED COMPUTERS AND 3-D TECHNIQUES THAT LOOKS DEEP INTO THE BREAST TO DISCOVER ABNORMALITIES THAT MIGHT NOT BE VISIBLE IN OTHER EXAMS.

10 cm

DO I STILL NEED TO HAVE A MAMMOGRAM IF I HAVE A BREAST MRI?

Absolutely. A Breast MRI should never take the place of your annual x-ray mammogram. Even if you have a normal Breast MRI, you should still continue to have an annual mammogram, one of the most effective tools in breast cancer detection.



Patient positioned before exam.



Patient lies face down, with the upper part of the body here.

WHAT IS THE BREAST MRI EXAM LIKE?

The exam typically takes 30 to 45 minutes. First, patients must change into a hospital gown. Then, an IV is inserted into your arm. You will lie face down on a table, where the breasts are positioned into cup-like indentations on the table. The table is then moved into the MRI machine.

You will need to lie very still as images are taken. About halfway through the exam, you will receive a painless injection and then more images are taken.

If you are claustrophobic or anxious about your MRI exam, don't worry. We can provide you with medication that will make you very comfortable during the exam. However, you will need someone to drive you home.

After the exam is complete, special computers are used to analyze the enormous number of images. Results of the exam are not immediately available. Your physician will be contacted with the results.



WHAT IS THE DIFFERENCE BETWEEN A BREAST MRI AND A MAMMOGRAM?

	MAMMOGRAM	BREAST MRI
Used For	Screening	Specific breast problems
Radiation	Yes	No
Widely Available	Yes	No
Injection	No	Required
Covered By Insurance	Usually	Usually

You Cannot Undergo MRI If You Have:



- A pacemaker
- Residual pacemaker leads
- A TENS unit or residual wires
- A defibrillator (AICD)
- Any internal pump device
- An inner ear implant
- A brain aneurysm clip
- Any metal in your eyes

THE FOLLOWING CONDITIONS/SITUATIONS MAY AFFECT THE SCHEDULING OF YOUR BREAST MRI.

- Pre-menopause**.....Must schedule between days 5-14 of cycle.
 - Postmenopause**.....If on HRT, must discontinue for at least 30 days prior to MRI.
 - Birth Control Medication**.....Notify us at scheduling.
 - Chemotherapy**.....Insurance covers MRI before & after completion of therapy only.
 - Radiation Therapy**.....(XRT) Must wait for 6 months after completion date.
 - Lumpectomy**.....Can be imaged immediately after, before additional therapy.
 - Breast Biopsy**.....Okay for MRI.
-
- Mammograms**.....Must have most recent mammogram and report on site on appointment day.

All patients will receive an IV, because an injection is required during exam.

Estrogen affects the results of Breast MRI. You may be asked to discontinue estrogen medication at scheduling which may delay your exam.